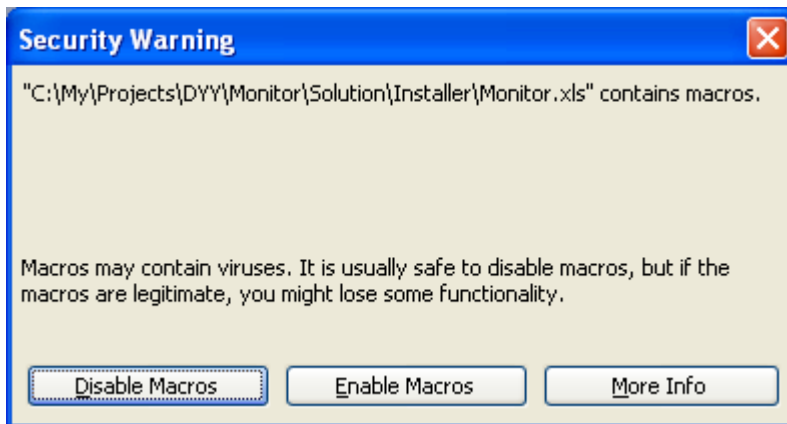
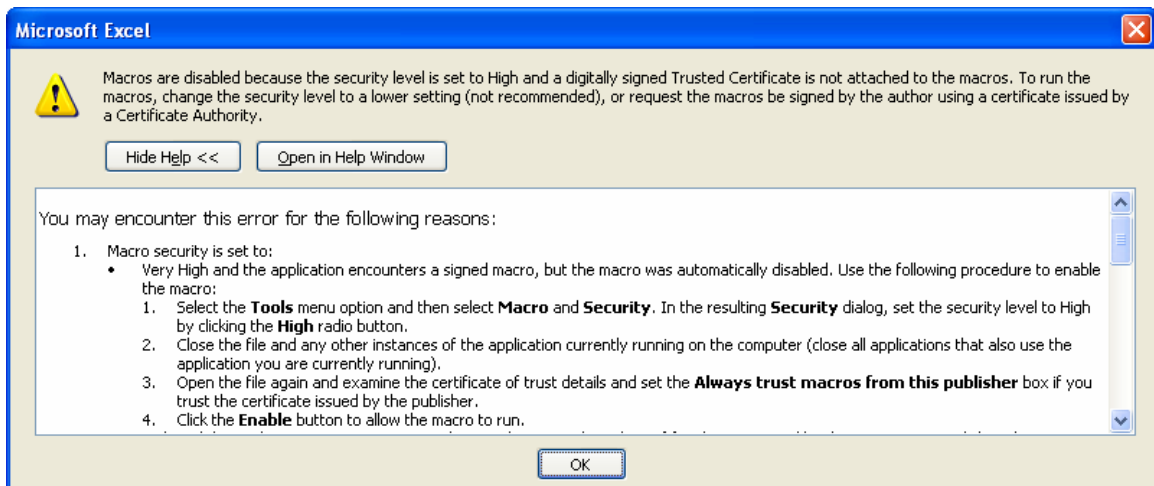


Follow these steps to start the Portfolio Monitor Program (images are based on Excel 2003 but the description work for Office XP and 2002):

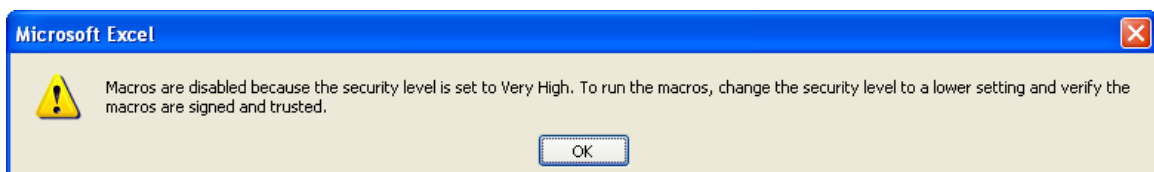
1. Make sure to set the Macro Security Level in Excel to Medium.
2. Open the Portfolio Monitor from the Desktop 'DYY Monitor' short cut or from the programs Start Menu (Start, All Programs, Double Your Yield, Portfolio Monitor);
3. The Security Warning dialog will open.
4. If your security settings are set to medium, you will see the following dialog showing that the program contains Macros from Double Your Yield LLC.



5. Click Enable Macros. The program will open allowing you to monitor your portfolio and enter new positions.
6. If the security settings are set to High, you will see the following dialog:



7. Click OK, set the security level to MEDIUM. Close Excel and start again from step 2 above.
8. If your security level is set to Very High you will get the following dialog.



9. Click OK, set the security level to Medium. Close Excel and start again from step 2 above.
10. If your security level is set to Low (not recommended), the Double Your Yield Portfolio Monitor program will start without a security warning.